

A close-up photograph of a woman with dark hair, wearing a beige knit cardigan, breastfeeding her baby. She is smiling and looking down at the baby. The baby is lying on her chest, wearing a light-colored long-sleeved shirt. The woman's hands are gently holding the baby. The background is softly blurred, showing a wooden chair and a window.

# Feeding with love

#LOVIbook2020

#LOVIbook2020





“Breastfeeding is the greatest gift you can give to your baby. It is the perfect state which the baby instinctively seeks from the moment of birth. That is why LOVI wants to protect lactation and the natural suckling reflex.”

Join us!

facebook®

facebook.com/lovipolska





# Take advantage of professional breastfeeding support

In cooperation with prominent specialists in the field of lactation, neonatologists and speech and language therapists, LOVI brand creates innovative products, providing the necessary assistance to breastfeeding mothers, along with products for alternative feeding and soothing (bottles and teats for serving expressed milk, and soothers), safe for the child's suckling reflex.

This safety is confirmed by the results of the LOVI teat and bottle tests, conducted under clinical conditions, involving large groups of infants, as well as by recommendations from medical practitioners and numerous awards granted for LOVI bottles.

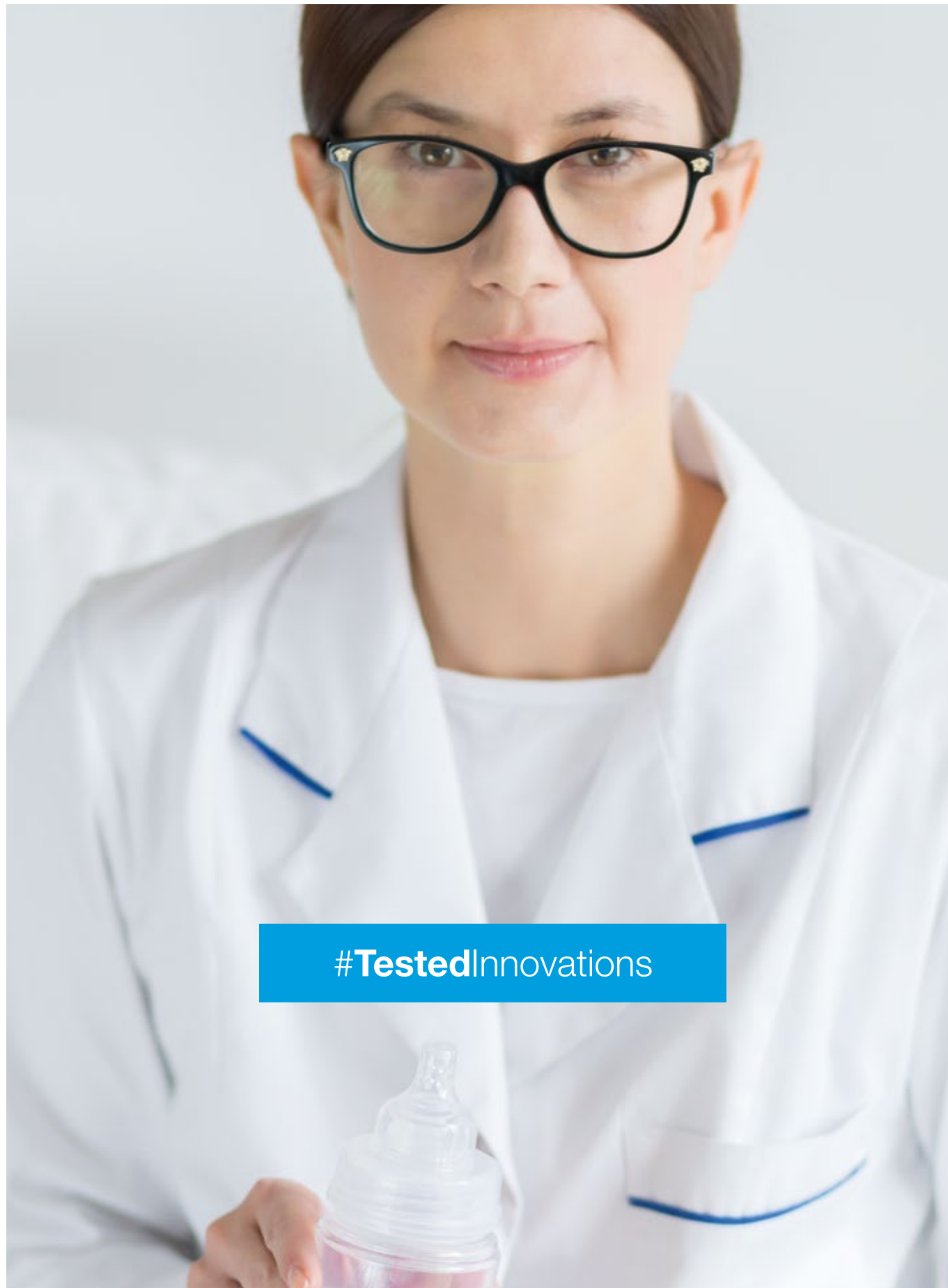
We are trusted by experts, so you can trust us as well.

## Visit:

[www.lovibaby.com](http://www.lovibaby.com)

Learn about our unique programme: "Breastfeeding Course".





#TestedInnovations

## Trust the experts

LOVI brand in collaboration with leading lactation and neonatal specialists, as well as speech and language therapists, conducts the research and educational programme known as Tested Innovations.

In order to support breastfeeding and the active development of a child from its first days of life, we develop, in conjunction with medical experts, feeding and soothing products that meet the most stringent safety standards.

LOVI accessories are designed based on the latest medical knowledge and innovative technologies.

They are subjected to:

- ✓ clinical trials (bottles, teats and soothers),
- ✓ trials conducted by hospital personnel , with the participation of breastfeeding mothers (breast pumps).

Clinical trials, managed by medical practitioners and midwives, and involving the parents, are carried out in hospitals and specialist clinics. The trials are conducted using a large number of infants to provide statistically meaningful and credible results. Only then are the products placed on the market.



**Brand recommended by midwives\***

\* Based on a survey conducted in 2017 on a group of 213 midwives.

Check research  
results

[www.lovibaby.com](http://www.lovibaby.com)

See **page. 67**





LOVI Dynamic Teat® expands with the baby’s sucking rhythm – imitating mother's breast.

## Unique achievements of LOVI in promoting healthy suckling



### A unique, dynamic structure of the soother

The nipple is made of heterogeneous silicone. It does not impede proper speech or orthodontic development, enables easy breathing and swallowing of saliva, and prevents biting of the soother's nipple. The teat does not impede the suckling reflex in neonates and infants.\*

### The unique technology of heterogeneous silicone feeding teat layers

A thick layer of silicone as a base and a thin layer at the tip of the LOVI Dynamic Teat®: the thin tip of the teat expands, actively stimulating the baby's oral muscles to exert effort; its harder base provides a wider, more stable support for the lips and prevents biting of the teat. With this technology the teat is more compatible with breastfeeding and does not impede the suckling reflex.\*\*

\*) When used in accordance with the manufacturer's recommendations provided in the product information leaflet.  
\*\*) Confirmed through an out-patient sample survey conducted under clinical conditions in 2007, using a specialized questionnaire, on a group of 607 infants, involving medical practitioners, midwives and parents.  
REMEMBER: LOVI brand recommends breastfeeding as the healthiest feeding method. It recommends to start using an alternative feeding method only after consulting your medical practitioner, midwife or pharmacist, when breastfeeding is impossible or insufficient.





Breastfeeding is the best gift that you can give to your baby on their birth day.

# Protection of breastfeeding

Breastfeeding is the healthiest and most valuable feeding method for newborns and infants. Although most mums want to breastfeed their babies, to begin may prove challenging.

That is why it is so important that your effort ends with success. To help you overcome lactation problems and to protect lactation, **we create products dedicated to natural feeding. These will help you overcome difficulties, while ensuring breastfeeding comfort.**

Thanks to this, those moments spent with the baby attached to your breast will be sheer pleasure.



# Expert in solving lactation problems

and milk expression

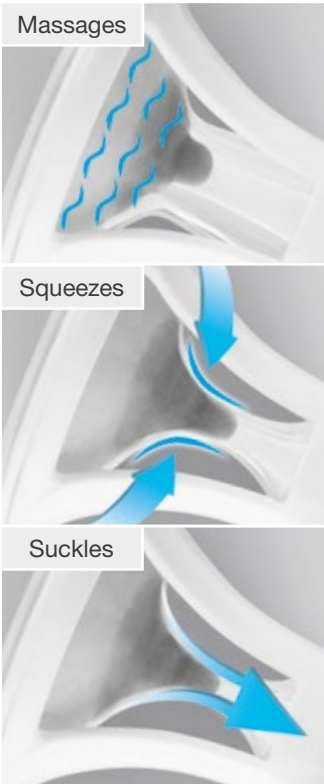
2-Phase Electric Breast Pump  
Expert

cat. no. 50/000exp

Spare  
elements  
available!

2 PHASE

3D Pumping  
TECHNOLOGY








## Expert in solving lactation problems and milk expression

Advanced technology in terms of the construction and operation of the funnel, as well as a 2-phase function, to perfectly mimic the baby's breast suckling process: effectively and gently.

### Set includes:

- ✓ electronic control panel
- ✓ breast pump with bottle adaptor and LOVI Medical + 150 ml bottle
- ✓ set of accessories for manual expressing
- ✓ accessories for feeding and milk storage kit
- ✓ feeding cup with a scale
- ✓ bottle stand
- ✓ silicone tubing with connector
- ✓ AC adapter
- ✓ breast pump carrying case
- ✓ spare parts
- ✓ 10 Discreet Elegance breast pads

-  Quiet
-  Light
-  Durable lithium-ion battery (up to 3 hours of continuous operation)
-  Possibility of manual expression
-  Practical storing case

REMEMBER: LOVI brand recommends breastfeeding as the healthiest method of feeding. It recommends to start using an alternative feeding method only after consulting your medical practitioner, midwife or pharmacist, when breastfeeding is impossible or insufficient.



### Innovative 3D Pumping technology

The soft, silicone funnel is dynamically involved (it massages, squeezes and suckles), surrounding the nipple.



### Efficient

Due to special technology, it is able to express **up to 100 ml of milk in 10 min.**



### Easy to use

Intuitive touch panel and legible display make it easy to use.



# Comprehensive protection of lactation

Manual Breast Pump  
Expert

cat. no. 50/030exp

Spare  
elements  
available!

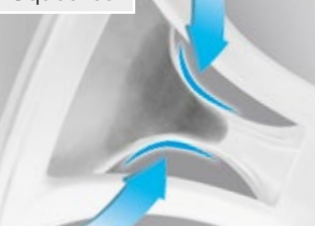
**3D** Pumping  
TECHNOLOGY



Massages



Squeezes



Suckles



## Comprehensive protection of lactation

The breast pump is gentle and effective, thanks to a silicone funnel and the 3D Pumping technology used for expressing (combination of massaging, squeezing and suckling). Together with other accessories in the kit, it offers a comprehensive solution for the mother and child, protection of lactation and support of breastfeeding.

### Set includes:

✓ breast pump with 150ml Medical+ Bottle ✓ accessories for feeding and storage kit (MINI teat, twist top, sealing disc) ✓ feeding cup with a scale ✓ bottle stand ✓ storage bag ✓ spare parts ✓ 6 Discreet elegance breast pads - various colours



Light



Venting valve



Convenient storing bag

REMEMBER: LOVI brand recommends breastfeeding as the healthiest feeding method. It recommends to start using an alternative feeding method only after consulting your medical practitioner, midwife or pharmacist, when breastfeeding is impossible or insufficient.



### Innovative 3D Pumping technology

The soft, silicone funnel is dynamically involved (it massages, squeezes and suckles), surrounding the nipple.



### Convenient handle

It has an easy grip, which ensures effective milk expression.



### Numerous benefits in one set

The set provides comprehensive protection of lactation: from milk expression, feeding the child, to milk storage.



# Exclusive protection during day and night

Disposable Breast Pads Discreet Elegance

- cat. no.  
○ 40 pcs - 19/602  
○ 60 pcs - 19/607
- 20 pcs - 19/610  
● 20 pcs - 19/611



Medical Device



## Exclusive protection during day and night

Super absorbent and extremely thin Discreet Elegance pads guarantee dryness both during the day and night. They are conveniently shaped

and finished with an elegant-looking lace, ensuring ultimate comfort and hygiene.



### Super absorbent

Gelling filling retains moisture up to 100 ml.



### Breathable

They are air permeable, protecting the sensitive breast skin against scalding.



### Wrapped individually

Convenience, each pad wrapped individually.

# Soft like mother's touch

LOVI Nipple Shields Skin Touch

- cat. no.  
size S – 5/605gb  
size M/L – 5/606gb

2 pcs in a capsule



## Protection of breast nipples

Helpful with concave or flat nipples, they imitate a breast nipple. They can be used after consulting your lactation professional, in cases of hypersensitivity of or damage to the nipples. Available in two sizes: S (small) and M/L (standard).



### Extremely thin

Which enables for even easier milk suckling by a child. Thin and soft tip reduces the distance to the nipple.



### Matt surface

Imitates mother's skin, its texture and delicacy, and high-quality silicone does not change the taste and smell of milk, which gives the child a feeling of naturalness.



### Profiled shape

Enables the baby to maintain direct contact with its mother's breast. Nipple Shields adhere very well to the body thanks to which suckling of breast milk is easier for a child.





## Combining breastfeeding with bottle feeding

If you are experiencing periodic breastfeeding difficulties, want to leave your child in the care of another person or if your paediatrician recommends that your baby needs extra feeding for medical reasons, our accessories enable you to feed milk in a way that does not impede your baby's suckling reflex or discourage it from breast suckling. This means you can return to breastfeeding without any problems.



# Safe for breastfeeding

LOVI Dynamic Teat®



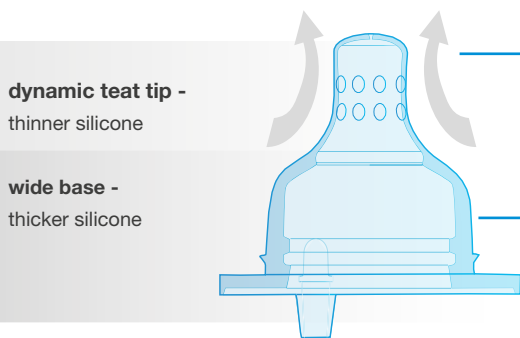
- cat. no.
- SUPER vent** 0 m+ mini – 18/749
  - SUPER vent** 3 m+ slow – 18/750
  - SUPER vent** 6 m+ medium – 18/751
  - SUPER vent** 9 m+ fast – 18/752
  - 6 m+ \*porridge – 18/753
  - 3 m+ \*tri-flow – 18/754
- 2 pcs in a container

## OPINION OF A SPEECH AND LANGUAGE THERAPIST



The teat should be constructed in a dynamic fashion and function actively in the mouth of the baby in a manner mimicking breast suckling, while stimulating the infant to actively exert effort. This fosters the correct development of the articulatory apparatus muscles and in the future will provide the basis for the child's proper speech development."

Aleksandra Lada M.D., PhD,  
Speech and Language Therapist



### Active teat movements

The soft and dynamic tip expands and contracts with the baby's suckling rhythm, enabling active speech muscle training.

### Role of the teat base

The hard and profiled base lets the baby's lips remain tightly attached to the teat – it supports breathing through the nose and prevents biting of the teat base.

### Teat made of heterogeneous silicone layers

LOVI Dynamic Teat® for feeding with the mother's expressed milk, designed in conjunction with speech and language therapists. It was created with the use of heterogeneous layer technology: it has a soft, thin, expanding tip and a hard, wide and profiled base. Thus, it does not interfere with breastfeeding. Clinically tested in Poland. It features an effective **SUPER vent** air release system preventing it from getting drawn in and collapsing.

\*The flow structure does not require additional air-release.  
REMEMBER: LOVI brand recommends breastfeeding as the healthiest method of feeding. It recommends to start using an alternative feeding method only after consulting your medical practitioner, midwife or pharmacist, when breastfeeding is impossible or insufficient.

89% of MEDICAL  
PRACTITIONERS

did not observe any difficulties  
in combining breastfeeding with bottle  
feeding using LOVI bottle.\*

\* an out-patient sample survey conducted under clinical  
conditions in 2007, using a specialised questionnaire, on  
a group of 607 infants aged 0-12 months



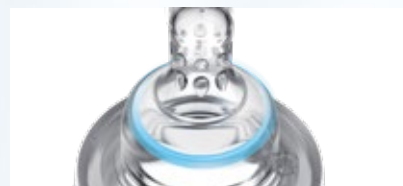
### Dynamic tip of the teat

Made of a thin layer of silicone. Actively works to stimulate the muscles of the mouth so they are active. The baby has to work for food.



### Venting system **SUPER vent**

It reduces the risk of colic. The venting valve prevents the teat from getting drawn in and collapsing, thus reducing the risk of colic.



### Hard, wide, profiled base

Made of a thicker layer of silicone. It provides a stable support for the lips. The profile and width of the base, selected by medical experts, ensures the baby opens its lips to the right position.



# Protection of the suckling reflex

Medical+ Bottle with Dynamic Teat®



- |                     |          |
|---------------------|----------|
|                     | cat. no. |
| 0 m+ teat<br>150 ml | – 21/564 |
| 3 m+ teat<br>250 ml | – 21/562 |
| 9 m+ teat<br>330 ml | – 21/560 |

## RESULTS OF A CLINICAL TRIAL OF THE LOVI BOTTLE\*



A sample survey conducted among medical practitioners, nurses, midwives and parents has confirmed that using the LOVI feeding bottle is safe for breastfeeding, letting the baby preserve their suckling rhythm, the correct coordination of suckling, swallowing and breathing, the active use of lips and tongue muscles, and suckling efficiency.

\*\* confirmed through an out-patient sample survey conducted under clinical conditions in 2007, using a specialized questionnaire, on a group of 607 infants, involving medical practitioners, midwives and parents

### Safe for breastfeeding

A bottle for serving expressed breast milk safe for a breastfed baby as it does not impede its suckling reflex. Designed with the participation of medical professionals and clinically tested. Provided with a professional Dynamic Teat® made of heterogeneous silicone layers (a thin, dynamic, extending tip and a hard, profiled base). This requires active suckling by the baby: extensive use of the muscles of its lips and tongue. Compatible with LOVI breast pumps. Equipped with a teat with the **SUPER vent** air-release system. Withstands repeated boiling.

### Set includes:

- ✓ 150 ml / 250 ml / 330 ml polypropylene bottle (BPA 0%)
- ✓ LOVI **SUPER vent** Dynamic Teat®
- 0 m+ in 150 ml bottle
- 3 m+ in 250 ml bottle
- 9 m+ in 330 ml bottle
- ✓ flexible sealing disc
- ✓ twist top
- ✓ feeding cup

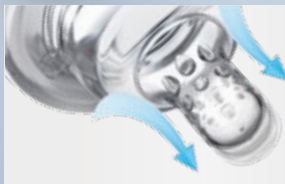
REMEMBER: LOVI brand recommends breastfeeding as the healthiest method of feeding. It recommends to start using an alternative feeding method only after consulting your medical practitioner, midwife or pharmacist, when breastfeeding is impossible or insufficient.

96% of MEDICAL PRACTITIONERS

confirmed that the co-ordination of suckling, swallowing and breathing was not adversely affected\*

97% of MEDICAL PRACTITIONERS

confirmed proper, active work of the muscles of lips and tongue\*



#### Dynamic tip of the teat

Made of a thin layer of silicone. The tip of the teat expands and contracts with the baby's suckling rhythm, stimulating the muscles of the mouth so they are active. The baby has to work for food.



#### Feeding cup

It has a scale and a special rim to safely serve milk and drugs to newborns and infants.



#### Profiled shape of the bottle

It makes it easy to properly hold the bottle and serve the feed in a safe position.



# Safe for breastfeeding

Trends Bottle with Dynamic Teat®



cat. no.

0 m+ teat 120 ml Indian Summer – 21/582  
Botanic – 21/586

3 m+ teat 240 ml Indian Summer – 21/580  
Botanic – 21/584

## Safe for breastfeeding

Bottle for feeding a mother's expressed milk. The bottle is decorated with stylish patterns, following the latest trends. It is available in two fashionable collections. Safe for a breastfed baby as it does not impede the suckling reflex and does not interfere with breastfeeding. Provided with professional Dynamic Teat® made of heterogeneous

silicone layers (a thin, dynamic, extending tip and a hard, profiled base). This requires active suckling by the baby: extensive use of the muscles of its lips and tongue. The teat is equipped with the **SUPER vent** air-release system, preventing it from getting drawn in and collapsing. The bottle is compatible with LOVI breast pumps.

## Set includes:

- ✓ 120 ml / 240 ml polypropylene bottle (BPA 0%)
- ✓ LOVI **SUPER vent** Dynamic Teat®
  - 0 m+ in 120 ml bottle
  - 3 m+ in 240 ml bottle
- ✓ flexible sealing disc
- ✓ twist top
- ✓ feeding cup

REMEMBER: LOVI brand recommends breastfeeding as the healthiest method of feeding. It recommends to start using an alternative feeding method only after consulting your medical practitioner, midwife or pharmacist, when breastfeeding is impossible or insufficient.



89% of MEDICAL PRACTITIONERS

did not observe any difficulties in combining breastfeeding with bottle feeding using LOVI Dynamic teat®\*

96% of MEDICAL PRACTITIONERS

confirmed that the co-ordination of suckling, swallowing and breathing was not adversely affected\*



## Dynamic tip of the teat

Made of a thin layer of silicone. Actively works to stimulate the muscles of the mouth so they are active. The baby has to work for food.



## Venting system **SUPER vent**

It reduces the risk of colic. The venting valve prevents the teat from getting drawn in and collapsing, thus reducing the risk of colic.



## Modern and fashionable design

Bottle decorated following the recent trends. Other accessories for feeding and soothing can be selected in matching collections.

\* an out-patient sample survey conducted under clinical conditions in 2007, using a specialised questionnaire, on a group of 607 infants aged 0-12 months, involving medical practitioners, nurses, midwives and parents (in Polish hospitals and paediatric clinics)



# Safe for breastfeeding

Self-Sterilising Bottle for steaming in microwave

cat. no.  
0 m+ teat 150 ml – 21/572  
3 m+ teat 250 ml – 21/570

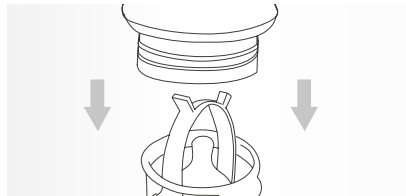
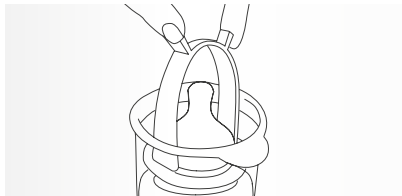
### Fast and easy sterilisation

Innovative Self-Sterilising LOVI Bottle does not require boiling in water or using steam sterilisers.

When properly assembled, the bottle self-sterilises.

### Set includes:

- ✓ 150 / 250 ml bottle (BPA 0%)
- ✓ Dynamic Teat® **SUPER vent** (0m+ in 150 ml bottle, 3m+ in 250 ml bottle)
- ✓ flexible sealing disc
- ✓ twist top
- ✓ hood for steaming in a microwave oven
- ✓ tongs
- ✓ feeding cup



### Hood and tongs for steaming

Allows you to steam all parts of the bottle in a microwave oven in just 90 seconds

### Step 1.

Pour 30 ml of water in the hood and place all the parts in it.

### Step 2.

Put the bottle upside-down in the hood, and place in the microwave oven. After a moment the bottle is ready.





# Nature-friendly bottle

## Diamond Glass Bottle



Baby Shower

0 m+ teat  
150 ml



cat. no.

Baby Shower ● – 74/104boy  
Baby Shower ● – 74/104girl  
Botanic ● – 74/105

3 m+ teat  
250 ml



Baby Shower ● – 74/204boy  
Baby Shower ● – 74/204girl  
Botanic ● – 74/205



Botanic



## RESULTS OF A CLINICAL TRIAL OF THE LOVI BOTTLE\*



The clinical trial of the LOVI bottle equipped with the Dynamic Teat®, conducted on a group of 607 infants aged 0-12 months, has confirmed the product's unique features: the preserved sucking rhythm, the correct coordination of sucking, swallowing and breathing, the active use of lips and tongue muscles, and sucking efficiency.

\*\* confirmed through an out-patient sample survey conducted under clinical conditions in 2007, using a specialized questionnaire, on a group of 607 infants, involving medical practitioners, midwives and parents

### Nature friendly, safe for breastfeeding

The bottle is made of high quality natural material: borosilicate glass (BPA 0%). It will meet the most stringent needs, being extremely durable and resistant to scratching, ensuring a high level of hygiene and keeping the feed warm for long. The innovative glass is resistant to freezing and boiling temperatures, and is renewable. The Dynamic Teat® preserves the suckling reflex and does not discourage the baby from breast suckling. The bottle has a readable scale and permanent print. Compatible with LOVI breast pumps.

REMEMBER: LOVI brand recommends breastfeeding as the healthiest method of feeding. It recommends to start using an alternative feeding method only after consulting your medical practitioner, midwife or pharmacist, when breastfeeding is impossible or insufficient.

### Set includes:

- ✓ 150 ml and 250 ml glass bottle (BPA 0%)
- ✓ LOVI Dynamic Teat® **SUPER vent** (0 m+ in 150 ml bottle and 3 m+ in 250 ml bottle)
- ✓ flexible sealing disk
- ✓ twist top ✓ feeding cup

89% of MEDICAL PRACTITIONERS

did not observe any difficulties in combining breastfeeding with bottle feeding using LOVI bottle.\*

88% of MEDICAL PRACTITIONERS

the suckling rhythm of the breastfed baby is maintained



### Natural and ecological material (BPA 0%)

Feed temperature remains unchanged for a longer period thanks to the durable and light borosilicate glass. This material is also easy to clean and resistant to freezing and boiling temperatures.



### Dynamic tip of the teat

Made of a thin layer of silicone. The tip of the teat expands and contracts with the baby's suckling rhythm, stimulating the muscles of the mouth so they are active. The child has to work to obtain the milk from the teat.



### Venting system **SUPER vent**

Reduces the risk of colic. The venting valve prevents the teat from getting drawn in and collapsing, thus reducing the risk of colic.



# Fast and intuitive milk preparation

Bottle Warmer



cat. no.

- 77/051\_whi
- 77/051\_grey



**must have**  
SELECTED BY LODZ DESIGN FESTIVAL 2019

Award in one of the biggest designer contests in Poland.

## LOVI Bottle Warmer

For preparing milk for your baby quickly and intuitively, at the optimal temperature.

### Set includes:

- ✓ bottle warmer
  - ✓ measuring cup
- Bottle not included.

It combines 4 functions:

1. Heats up the feed quickly and evenly.
2. Maintains the temperature for up to 10 hours.
3. Gradually defrosts the feed.
4. Steam disinfects the bottles and bottle accessories.



Temperature of liquids maintained for up to 10 hours, and defrosting function



Fast heating of feed and steam sterilisation of bottles

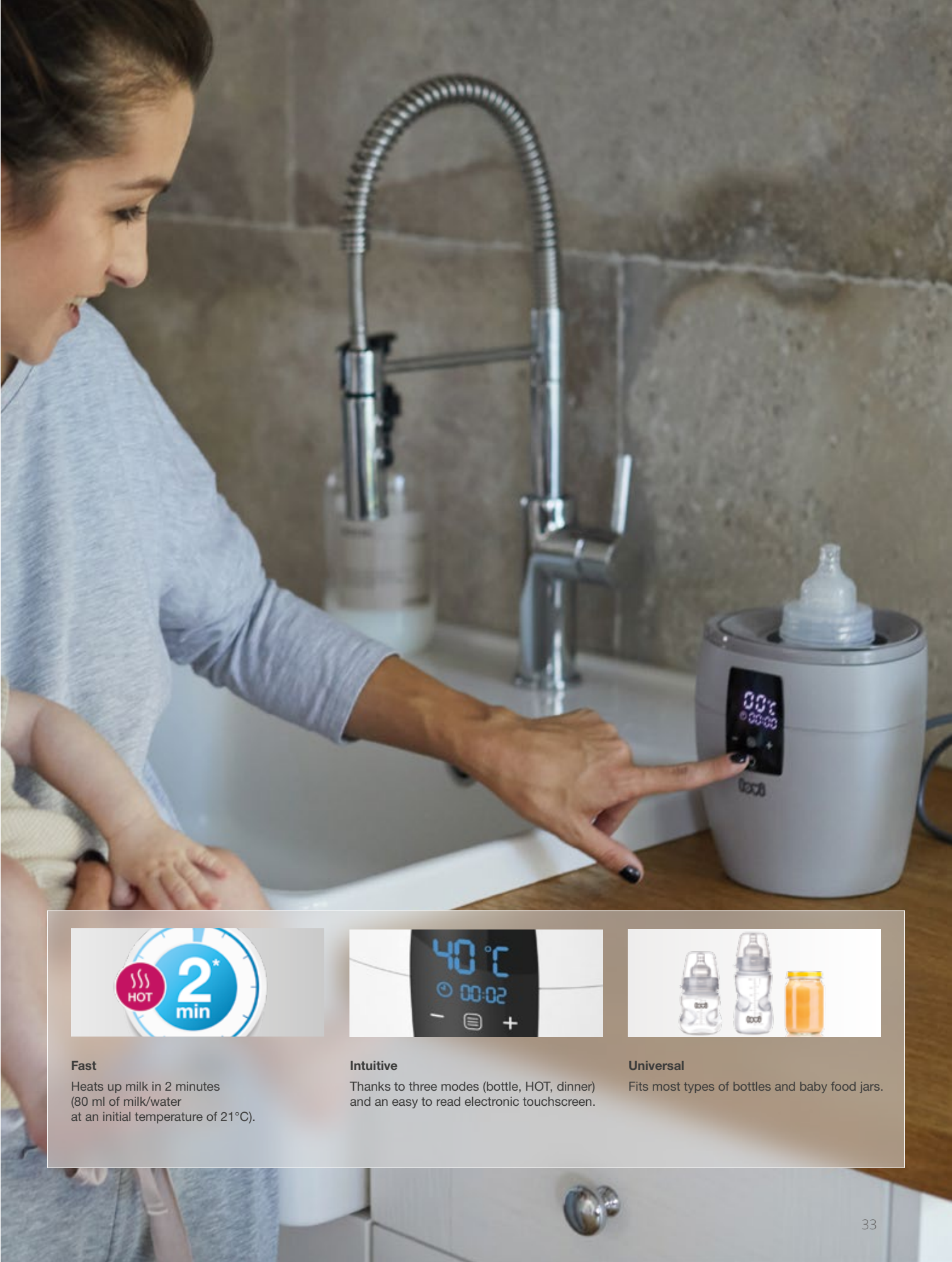


Feed temperature maintained for up to 3 hours



Prevention of overheating

REMEMBER: LOVI brand recommends breastfeeding as the healthiest method of feeding. It recommends to start using an alternative feeding method only after consulting your medical practitioner, midwife or pharmacist, when breastfeeding is impossible or insufficient.



### Fast

Heats up milk in 2 minutes (80 ml of milk/water at an initial temperature of 21°C).



### Intuitive

Thanks to three modes (bottle, HOT, dinner) and an easy to read electronic touchscreen.



### Universal

Fits most types of bottles and baby food jars.



# Essential during a walk

## Bottle Insulator

cat. no.

- 19/221\_blu
- 19/221\_pin



### Keeps the temperature of food

LOVI insulator maintains the temperature of hot food in a bottle for about two hours and prevents premature warming of cold water while out walking or traveling.



### 3-layer thermal insulation foil

maintains the temperature of the feed for up to two hours.



### Detachable strap

makes it easy to carry or attach it to the pram. The snap fastener is additionally reinforced with a velcro tab.



### Durable outside layer

made of non-toxic and easy-to-clean material.



LOVI insulators are perfect while out walking or travelling.





## Learning how to drink and eat

Is your baby a few months old and have you started to expand his diet and teach him how to drink? Take advantage of our non-spill cups, which allow children to drink independently but control the flow of liquid without the risk of choking or major spills. For an older child you can choose our innovative cup without a spout, which teaches the child the adult way of drinking, but without any spills.



# The beginnings of learning how to drink

## Training Cup



### The beginnings of learning how to drink

The first step in learning how to drink independently after the baby is six months old. Facilitates the transition from breastfeeding or bottle feeding to drinking from a cup. It has a soft spout and a scale to monitor the amount of liquid.  
Available capacity - 150 ml.

- 6 m+

Retro

150 ml – 35/300

cat. no.
- 6 m+

Buddy Bear

150 ml – 35/302



A scale that helps to monitor the amount of liquid



#### Soft spout

Does not irritate baby's sensitive gums and enables the free flow of liquids.



#### Profiled handles

Making it easier for little hands to hold.



#### Feeding cup

Perfect for feeding mousses, medicines and for learning how to drink from an open cup. It has a scale and a profiled rim.

# For active toddlers

## Non-spill Cup



### For active toddlers

For the next step in learning how to drink independently. Eases the transition from a training cup to drinking from an open cup or 360° Cup. A perfect companion on a walk or trip, it allows drinking without spilling. Available in two sizes:

- 150 ml (with soft spout for children 6m+)
- 250 ml (with hard spout for children 12m+)

Spouts fit also LOVI bottles!

Bottles, training cups and non-spill cups are compatible.



#### Soft spout

For children 6m+, does not irritate baby's sensitive gums, for 150 ml cup.



#### Hard spout

Intended for children 12m+, for 250 ml cup.

- 6 m+

Indian Summer

150 ml – 35/322girl

cat. no.
- 6 m+

Indian Summer

150 ml – 35/322boy

- 12 m+

Folky

250 ml – 35/330
- 12 m+

Folky

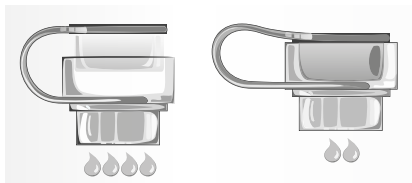
250 ml – 35/331



A scale that helps to monitor the amount of liquid



non-spill cup



#### Suction level adjustment

The suction level can be set by adjusting the valve.



# I sip and don't spill!

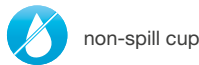
## My Non-spill Cup



Available capacities:

MINI 9 m+ 210 ml

JUNIOR 12 m+ 250 ml



Spare  
spouts  
available!

### LOVI My Non-spill Cup with a soft silicone spout.

It was designed to support and encourage independence while learning to drink. Have your baby think of it as "It's my cup!"

The soft spout is made of high-quality, chemically-inert silicone. Its shape and length are ergonomic. Therefore, the beverage does not wash the baby's teeth.

The small number of parts make My Non-spill Cup easy to assemble and wash. The cap protects the spout from getting dirty, and profiled handles with anti-slip base make My Non-spill Cup easy to handle. The lid fits the base of the LOVI 360° cup.

### Set includes:

- ✓ cup
- ✓ lid
- ✓ silicone spout
- ✓ handles



### Spout. Soft and silicone.

The high-quality silicone material is delicate and chemically inert.



### Easy to wash

All parts of the cup can be easily disassembled for washing. The spout is sterilisable.



### Ergonomic

Spout has an ergonomic shape and length that places it away from the child's teeth area.



### Buddy Bear

MINI 35/349  
JUNIOR 35/344



### Indian Summer

MINI 35/345girl  
JUNIOR 35/346girl

MINI 35/345boy  
JUNIOR 35/346boy





# Like drinking from a glass but without spilling

My 360° Cup



**Learning the adult way of drinking**  
Facilitates the transition from sucking liquid from training and non-spill cups to drinking from a glass. Thanks to innovative venting, it allows sucking the liquid from all around the rim. It accustoms child to the natural, adult way of drinking (like

drinking from a glass) but without spilling. It has a stable, rubberised base (mini and junior) and handles.



**Easy to clean**  
All cup elements can be easily removed and cleaned. A simple structure makes it possible to effectively penetrate all cup areas in order to remove soiling and deposits left by liquids other than water.



**Innovative sealing system**  
Enables drinking without spilling but it is designed deliberately not to be a non-spill cup so that when shaken vigorously or dropped, droplets of liquid can come out. It teaches the child to control its movements and prepares them to drink from an open cup.

Available capacities:

- MINI 9 m+ 210 ml
- JUNIOR 12 m+ 250 ml
- ACTIVE 14 m+ 350 ml

Seal available for purchase!

- Set includes:**
- ✓ cap
  - ✓ three-piece twist top
  - ✓ base
  - ✓ handles



**SteriTouch antibacterial protection®**  
Uses the natural, antibacterial properties of silver and reduces up to 99.99% of the bacterial population within 24 hrs.







### Buddy Bear



picture at the back



MINI 1/600new  
JUNIOR 1/599new

### Indian Summer



picture at the back



picture at the back

MINI 1/585new 1/586new  
JUNIOR 1/591new 1/592new  
ACTIVE 1/597new 1/598new

### Follow the Rabbit



MINI 1/524new 1/535new  
JUNIOR 1/544new 1/555new



Retro  
Baby

MINI 1/583new 1/584new  
JUNIOR 1/589new 1/590new



Folky

MINI 1/534new 1/523new  
JUNIOR 1/545new



Accessories



Non-spill Soft Spout

Also fits Medical+ bottles

cat. no.  
6m+ – 21/880



Non-spill Firm Spout

Also fits Medical+ bottles

cat. no.  
12 m+ – 21/890



Bottle and Cup Handles

cat. no.  
21/803  
2 pcs



360° Cup Gasket

cat. no.  
1/618  
2 pcs



My Non-spill Cup  
Silicone Spout

cat. no.  
59/870  
1 pc



Spout/Straw  
for My Cup with Straw

cat. no.  
74/000  
1 pc



# I drink freely

## My Cup with Straw "Click & Go"



Available capacities:

JUNIOR  
12 m+ 250 ml

ACTIVE  
14 m+ 350 ml

Available in IQ 2020

Click  
&  
Go!

### Learning the independence.

Specially designed to allow the child to drink freely. The straw is made of high-quality silicone. Its length is adjusted so that the liquid stays outside the child's teeth area.

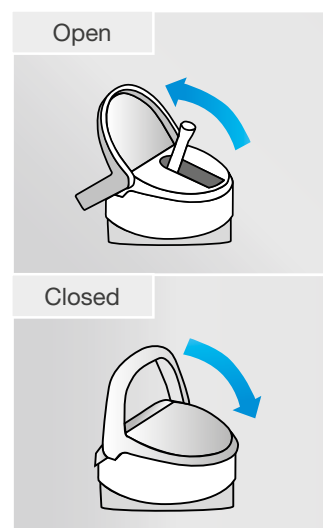
The cup has a cap with a comfortable handle, which allows easy closing and opening also for a child. Characteristic click is a sign that the cup is well closed and can be safely held by the child.

An additional protection against accidental spilling of the drink is the

Safe Lock button. My Cup with a Straw Click & Go allows the child to take a sip, close the cup and move forward for further exploration of the world.

### Set includes:

- ✓ body for liquid ✓ screw cap
- ✓ spout with straw



### Delicate straw

Made of soft, high-quality silicone that does not irritate the gums and is chemically inert.



### Convenient handle

It allows easy opening and closing, also by a child. The closure is strong enough to allow the child to hold the cup securely even while moving.



### Safety Lock

A specially designed button protects against accidental opening and spilling of a drink.





Salt & Pepper



picture at the back



JUNIOR 35/356  
ACTIVE 35/357

Match with  
Salt & Pepper  
soothers

p. 59

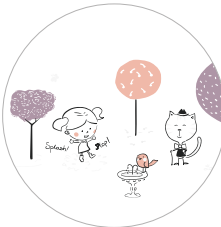
Lovely



picture at the back



JUNIOR 35/354boy 35/354girl  
ACTIVE 35/355boy 35/355girl



picture at the back







# Soothing

Suckling is fundamental to the development of the child from the moment of its birth. It allows it to control its craving, the quantity of feed eaten, as well as helps to soothe its emotions and feelings of safety. The strong need of suckling is partially satisfied by a soother. Its selection should be well thought out. Its shape and structure should enable breathing and swallowing of saliva, without impeding the natural suckling reflex.

Aleksandra Łada, MD



# Does not impede the suckling reflex

Dynamic Soother®



## RESULTS OF A CLINICAL TRIAL OF LOVI SOOTHERS\*



A sample survey conducted under clinical conditions\* confirmed the unique features of the LOVI Dynamic Soother®:

- does not impede the suckling reflex
- prevents the teat chewing reflex
- enables easy breathing and swallowing of saliva
- does not impede proper speech and orthodontic development

### Does not impede the suckling reflex, or proper speech and orthodontic development

Designed by speech and language therapists with a view to protecting the suckling reflex. It has a symmetrical shape that is similar to that of a breast nipple. It has a unique dynamic structure made of heterogeneous silicone that enables the natural suckling rhythm.



#### Dynamic nipple

Made of heterogeneous silicone, which allows it to expand and contract with the baby's suckling rhythm. The nipple's symmetrical shape is similar to that of a breast nipple.



#### Profiled mouth shield

Its profiled shape allows the child to freely breathe through its nose. The safe material from which it is made does not contain any Bisphenol A.



#### Openings in mouth shields

Allows free circulation of air and prevents irritation of the baby's soft skin.

Available in the following sizes:

**mini shield**  
0-2 m

**standard shield**  
0-3 m  
3-6 m  
6-18 m

**strengthened nipple**  
18 m+

### Set includes:

- ✓ soother 2 pcs
- ✓ soother cover 2 pcs
- ✓ container for hygienic storage of soother

90% of PARENTS and MIDWIVES

Would recommend LOVI Dynamic Soother® to other parents

“The shape and structure of the soother should enable breathing and swallowing of saliva and not impede the suckling reflex.”

Aleksandra Łada, MD  
Speech and Language  
Therapist

\*) an out-patient sample survey conducted under clinical conditions on a group of 150 infants aged 0-18 in specialised, regional paediatric and neurological clinics in Poland, operating under the National Health Fund in Katowice, Rzeszów and Bydgoszcz, involving midwives and parents



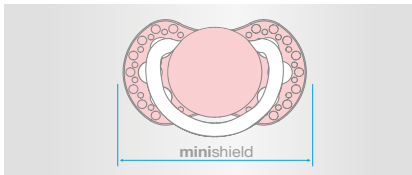
# Soother with smaller shield

Dynamic miniSOOTHER



## Recommended for newborns

In contrast to standard soothers, the LOVI miniSOOTHER has a smaller and lighter shield. It better adapts to the tiny mouth of a newborn.



## Smaller shield

Recommended for the youngest babies, aged 0-2 months. Nipple the same as in 0-3 m soothers.



## Extra light

Smaller shield means lighter product, better for newborns.

## My Little Love



**A luminous clip**  
makes it easy to find the  
soother when it is dark

cat. no.  
0-2 m+

- 2 pcs – 22/847boy
- 2 pcs – 22/847girl



## Buddy Bear



**A luminous clip**  
makes it easy to find the  
soother when it is dark

cat. no.  
0-2 m+

2 pcs – 22/862



0-2 m

The smallest  
of our  
soothers!

## Set includes:

- ✓ soother 2 pcs
- ✓ soother cover
- 2 items
- ✓ container for hygienic storage of soother







#welovedynamics

## Soother with standard shield

Dynamic Soother®

0-18 m

### Botanic



### Salt & Pepper




Available also  
for 18 m+  
p. 62

### I Love




### Buddy Bear

 **A luminous clip**  
makes it easy to find the soother  
when it is dark



### Pride & Joy

 **A luminous clip**  
makes it easy to find the soother  
when it is dark



### Indian Summer





# Soother with standard shield

Dynamic Soother®

0-18 m

## Night & Day



A luminous clip  
makes it easy to find the soother  
when it is dark



0-3 m+ 22/809boy\_E  
3-6 m+ 22/810boy\_E  
6-18 m+ 22/811boy\_E

0-3 m+ 22/809boy\_L  
3-6 m+ 22/810boy\_L  
6-18 m+ 22/811boy\_L



0-3 m+ 22/809girl\_H  
3-6 m+ 22/810girl\_H  
6-18 m+ 22/811girl\_H

0-3 m+ 22/809girl\_L  
3-6 m+ 22/810girl\_L  
6-18 m+ 22/811girl\_L

## Folky



0-3 m+ 22/841boy  
3-6 m+ 22/842boy  
6-18 m+ 22/843boy

0-3 m+ 22/841girl  
3-6 m+ 22/842girl  
6-18 m+ 22/843girl

## Retro Baby



0-3 m+ 22/803boy  
3-6 m+ 22/804boy  
6-18 m+ 22/805boy

0-3 m+ 22/803girl  
3-6 m+ 22/804girl  
6-18 m+ 22/805girl

## Follow the Rabbit



0-3 m+ 22/858boy  
3-6 m+ 22/859boy  
6-18 m+ 22/860boy

0-3 m+ 22/858girl  
3-6 m+ 22/859girl  
6-18 m+ 22/860girl



A luminous disc and spots  
make it easy to find the soother when it is dark



Match with  
soother  
holders

p. 64





# Soother for older children

Dynamic Soother® 18 m+



## Designed for older children

It retains all the properties of soothers for younger children, such as dynamism or a symmetrical shape resembling of mother's breast nipple. The silicone nipple of the soother is strengthened, making it resistant to biting. This is especially important during periods of intensive development of teeth and gums.

## Botanic

cat. no.  
18 m+

- 2 pcs – 22/875boy
- 2 pcs – 22/875girl



## Indian Summer

cat. no.  
18 m+

- 2 pcs – 22/876boy
- 2 pcs – 22/876girl



18 m+

## Set includes:

- ✓ soother 2 pcs ✓ soother cover 2 items ✓ container for hygienic storage of soother

## Salt & Pepper

cat. no.  
18 m+

2 pcs – 22/880



Strengthened  
nipple more  
resistant to  
biting





# Convenient and hygienic storage

## Soother Container

### Convenient and hygienic storage

Enables convenient and hygienic storage of the soother while out on a walk or travelling. Protects the soother against becoming soiled or lost. Hygienic and easy to steam sterilize, it helps to keep the soother clean while out on a walk or travelling.



#### Two clips

The container can be quickly and easily attached to a pram or a car seat, as well as to a belt or trousers.



# Safety and hygiene

## Soother Holder

### Safety and hygiene

The holder is equipped with a practical clip which makes it possible to conveniently and reliably fix the soother to baby's clothing, protecting it against becoming soiled or lost once the baby becomes more active.



#### A stable clip

A practical and stable mechanism protects the holder against detaching from the baby's clothing.



#### Convenient fastener

The holder can be easily attached, even with one hand, thanks to a simple clip.



#### Shape

Rounded shapes eliminate the risk of scratches or cuts.



## Buddy Bear

cat. no. 10/887



## Night & Day

cat. no. 10/880



## Retro

cat. no. 10/881



## Diamond

cat. no. 10/882



## Indian Summer

cat. no. 10/883



cat. no. 10/886



## Follow the Rabbit

nr. kat 10/884



Match with  
soothers

p. 59





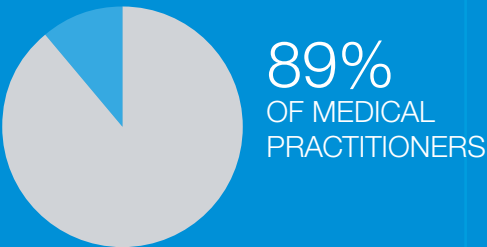
# Results of clinical trials

conducted under clinical conditions

Our advanced technologies are developed based on the requirements laid down by the specialists working closely with the LOVI brand. Selected LOVI products are tested in sample survey. We carry them out in hospitals and specialist clinics in conjunction with medical practitioners, midwives and parents, and involve large groups of infants.



# LOVI bottle with Dynamic Teat®



did not observe any difficulties in combining breastfeeding with bottle feeding using LOVI bottle\*

## RESULTS OF A CLINICAL TRIAL OF THE LOVI BOTTLE WITH DYNAMIC TEAT®



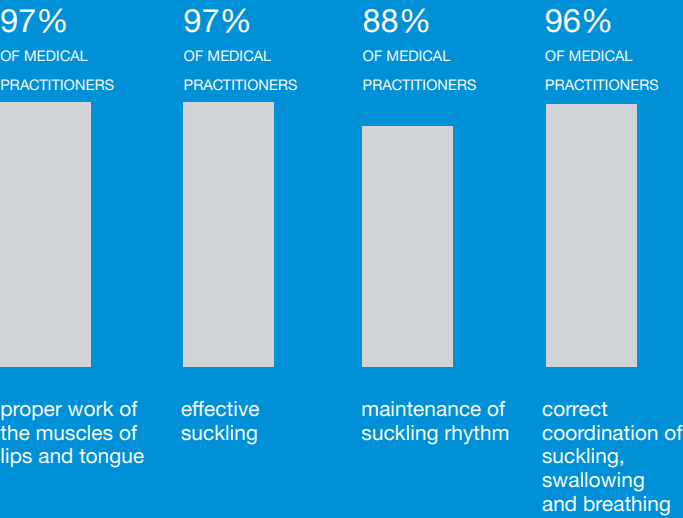
An out-patient sample survey conducted under clinical conditions in 2007, using a specialized questionnaire, on a group of 607 infants aged 0-12 months. Involving medical practitioners, nurses, midwives and parents (in Polish hospitals and paediatric clinics) confirmed the following unique features:

- maintenance of suckling rhythm
- correct coordination of suckling, swallowing and breathing
- active work of muscles of lips and tongue
- effective suckling

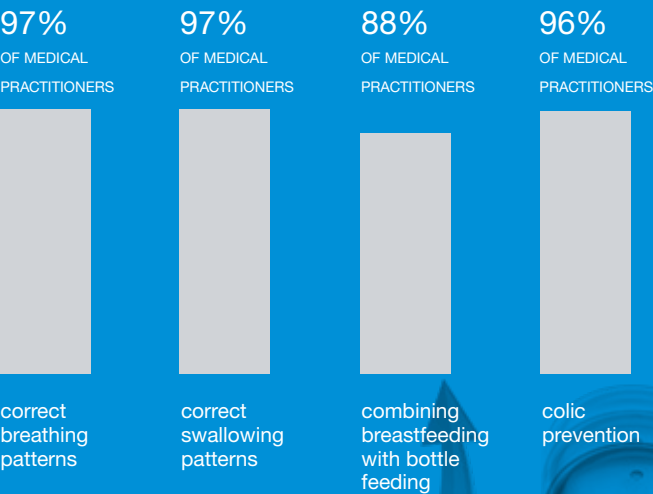
Clinical trial results prepared by: Aleksandra Lada M.D. PhD, Speech and Language Therapist, Specialist in Feeding and Communication Development Disorders in Young Children / NDT SLT Senior Tutor

REMEMBER: LOVI brand recommends breastfeeding as the healthiest method of feeding. It recommends to start using an alternative feeding method only after consulting your medical practitioner, midwife or pharmacist, when breastfeeding is impossible or insufficient.

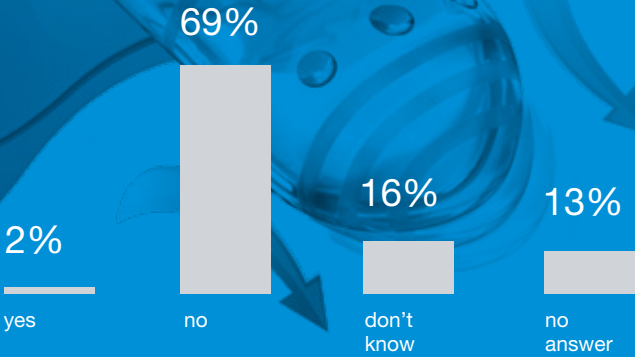
## Evaluation of the suckling function based on the proper physiological suckling pattern



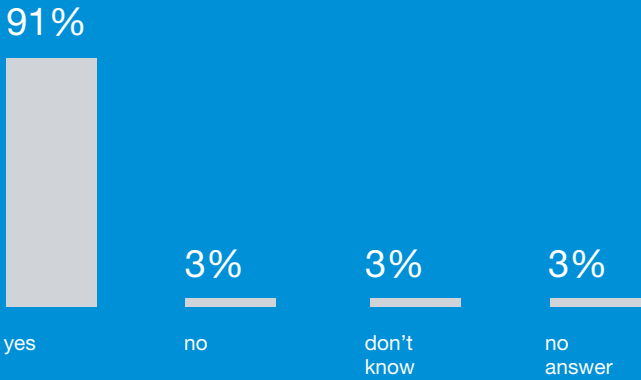
## Evaluation of the physiology of feeding: breathing patterns, swallowing patterns, ease of combining breastfeeding with bottle feeding and colic prevention



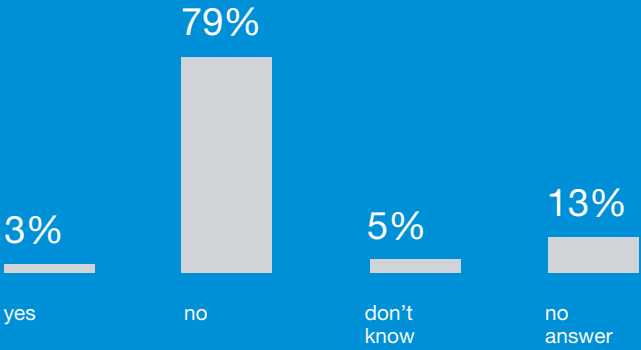
## Did you notice any negative changes during breastfeeding after using the LOVI soother?



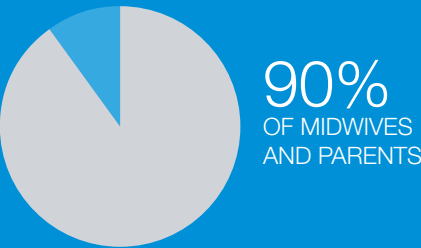
## Does your baby breathe freely through its nose while using the LOVI soother?



## Does your baby bite the LOVI soother when using it?



# LOVI Dynamic Soother®



would recommend LOVI Dynamic Soother® to other parents

## RESULTS OF A CLINICAL TRIAL OF THE LOVI SOOTHER



An out-patient sample survey conducted under clinical conditions on a group of 150 infants aged 0-18 in specialised, regional paediatric and neurological clinics in Poland, operating under the National Health Fund in Katowice, Rzeszów and Bydgoszcz, involving midwives and parents confirmed the following unique features of LOVI soothers:

- does not disturb the suckling reflex
- prevents the teat chewing reflex
- enables easy breathing and swallowing of saliva
- does not impede proper speech and orthodontic development\*

\* provided that recommendations of the orthodontist and speech and language therapist are followed



Quality management system in compliance with: ISO 9001 and ISO 22716  
© All rights reserved. This publication contains legally protected elements.  
No printed or electronic part of this publication, including images, themes,  
logos and slogans cannot be used, including duplicating, copying,  
leasing or distributing in any form or by any means without prior written  
permission of CANPOL Sp. z o. o.  
Trademark LOVI® is legally protected industrial property of  
CANPOL Sp. z o. o. or its licensors.







Get to  
know us!

**Canpol sp. z o.o.**

02-884 Warszawa,  
ul. Puławska 430, Polska.

**Office, Sales**

Słubica B, ul. Graniczna 4,  
96-321 Żabia Wola, Polska.

biuro@lovi.pl

tel.: (+48 46) 858 00 00,  
fax: (+48 46) 858 00 01

[www.lovibaby.com](http://www.lovibaby.com)



lovipolska



lovipolska



lovi\_karmienie\_miloscia